

Supported by:



Federal Ministry
for the Environment, Nature Conservation
and Nuclear Safety



Federal Agency for
Nature Conservation



EOCap4Africa

5c Remote Sensing Data: Creating Scientific Maps





Creating Scientific Maps



Maps

- Maps for what? What broad type of maps do exist?
 - Field work maps
 - Maps of final results
- Both serve a different purpose and hence have to be designed differently



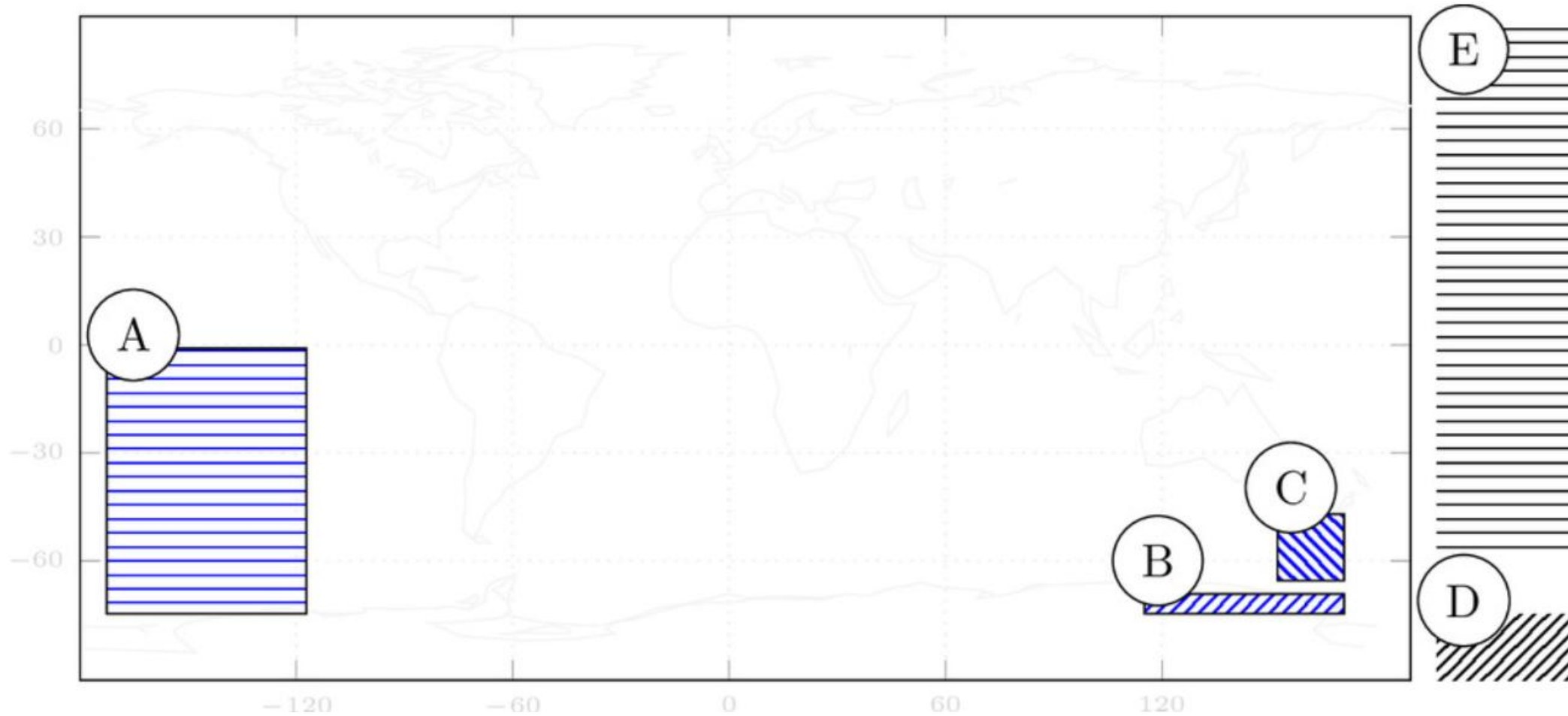
Maps – Purpose and implications

- Informative (study area and results)
- Not introducing any distortions
- Convey necessary information
- Communicate spatial results
- All needed details but focused on main message

- Design depends on aim (for yourself, for field work or for external presentations)



Creating Maps

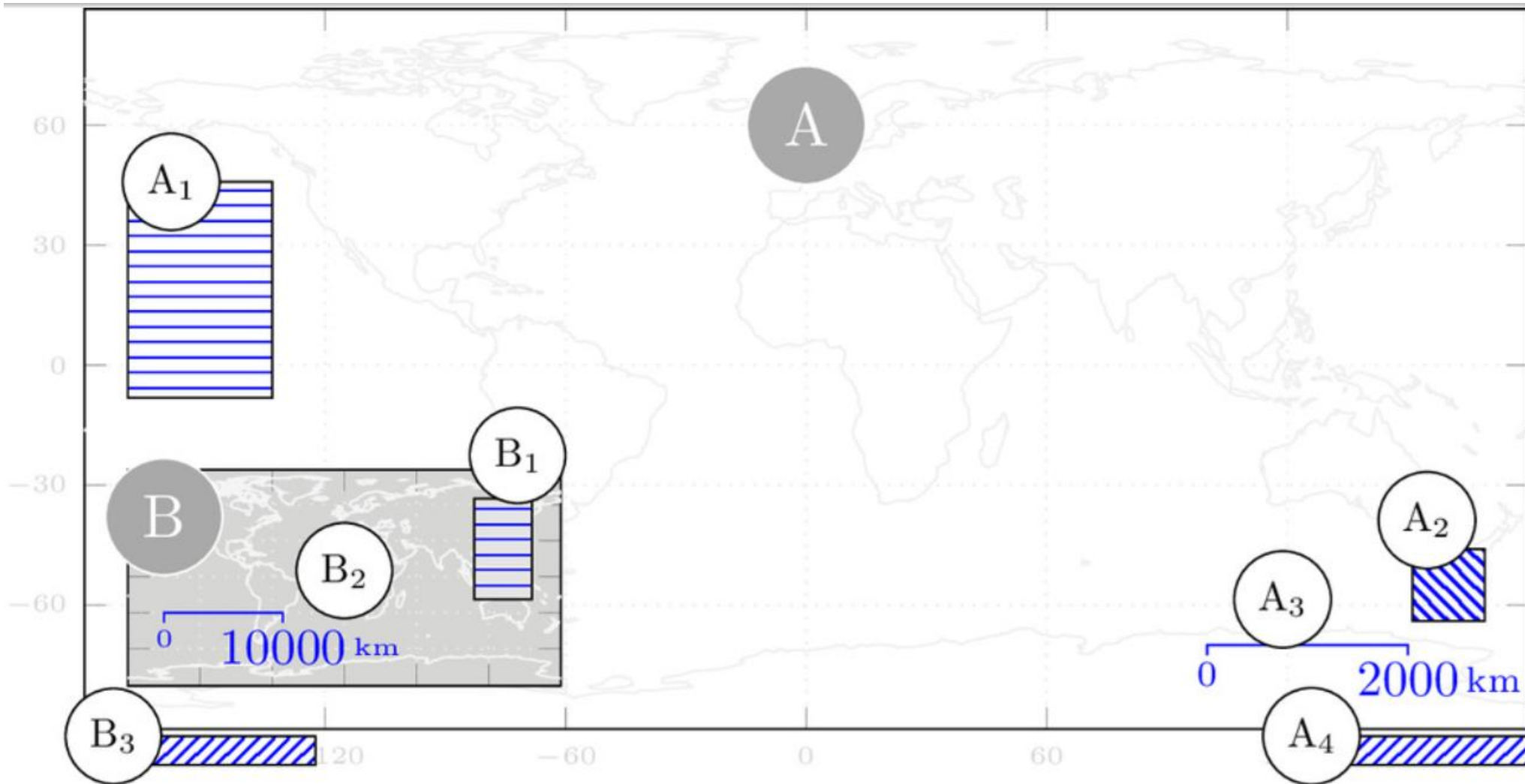


A: legend, B: scale bar, C: north arrow, E: explanations, logo, D: creator etc.

EORC, 2023



Creating Maps

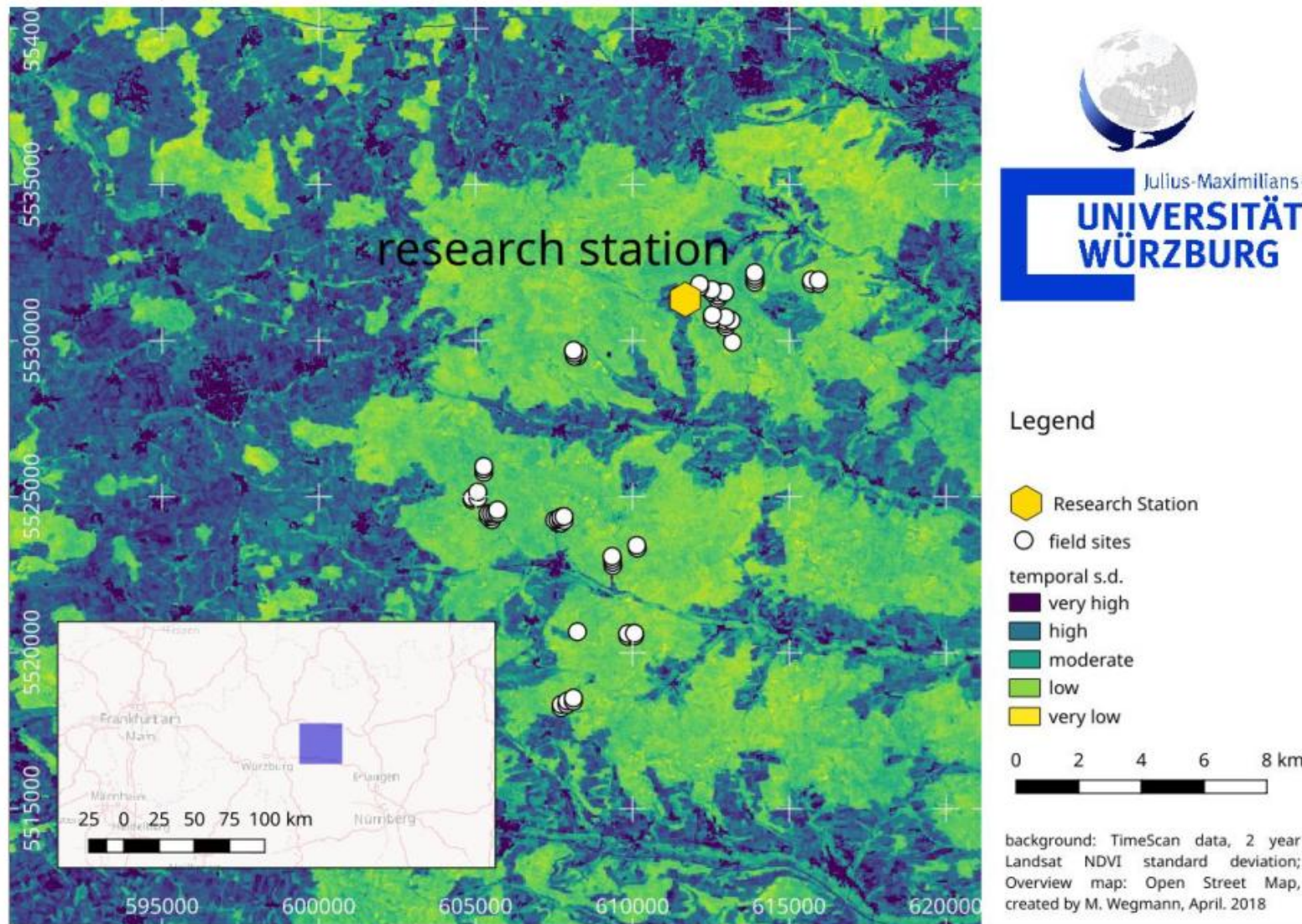


EORC, 2023

A: main map, B: overview map, A/B1: legend, B2/A3: scale bar, A2: north arrow, B3/B4:

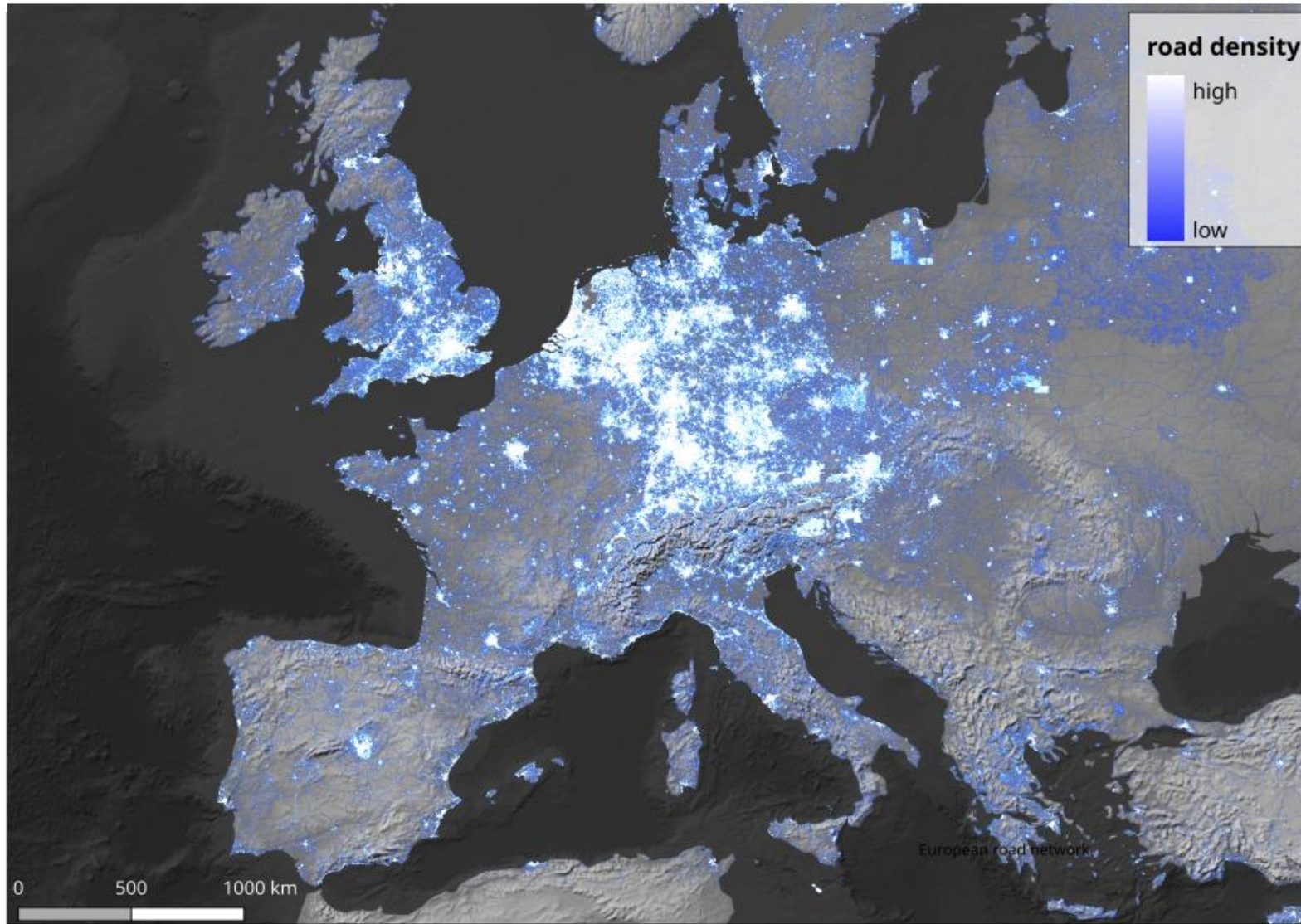


Creating Maps



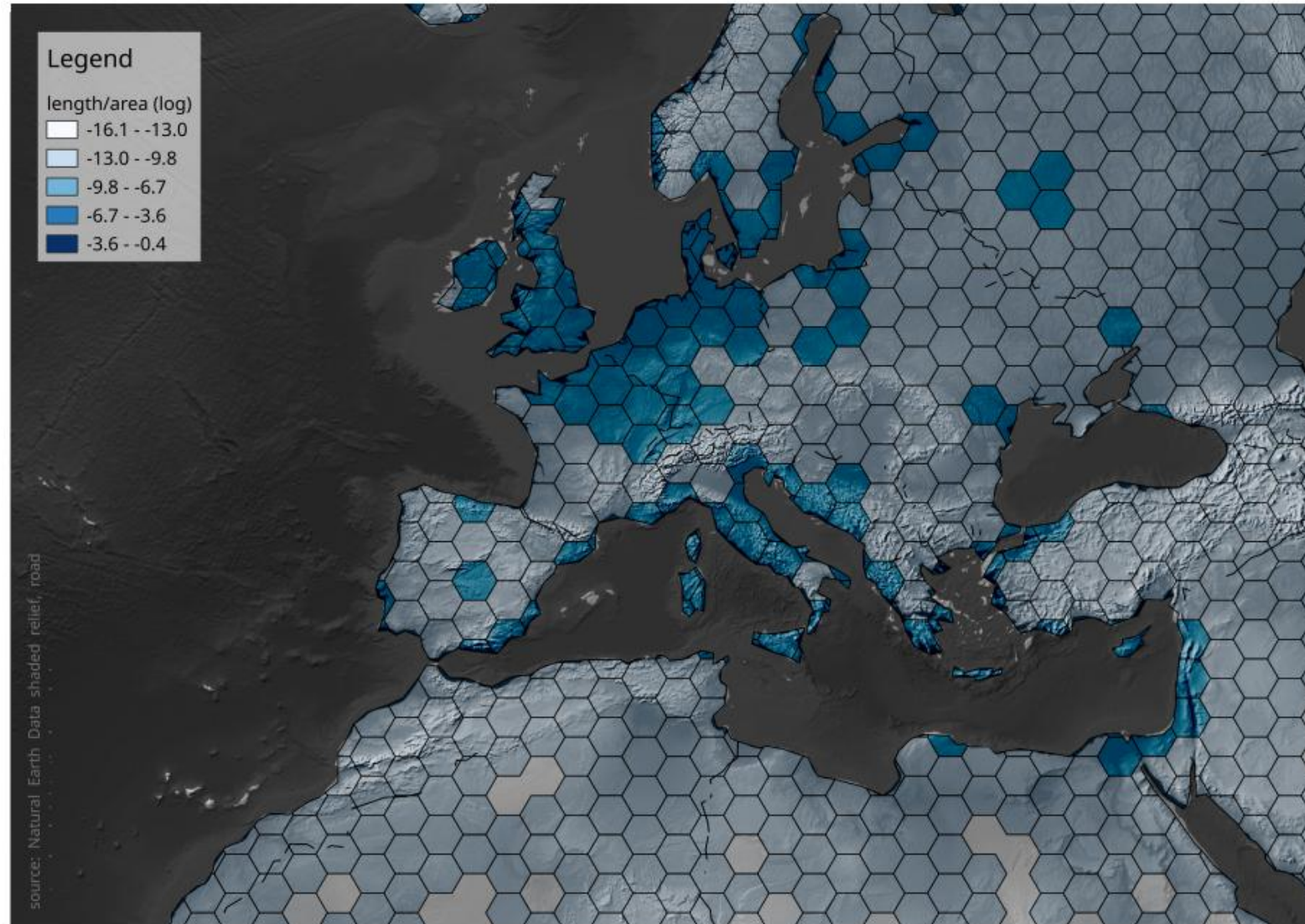


Creating Maps



Road density
European road network

Creating Maps



Source: Natural Earth
Data: Shaded relief, road



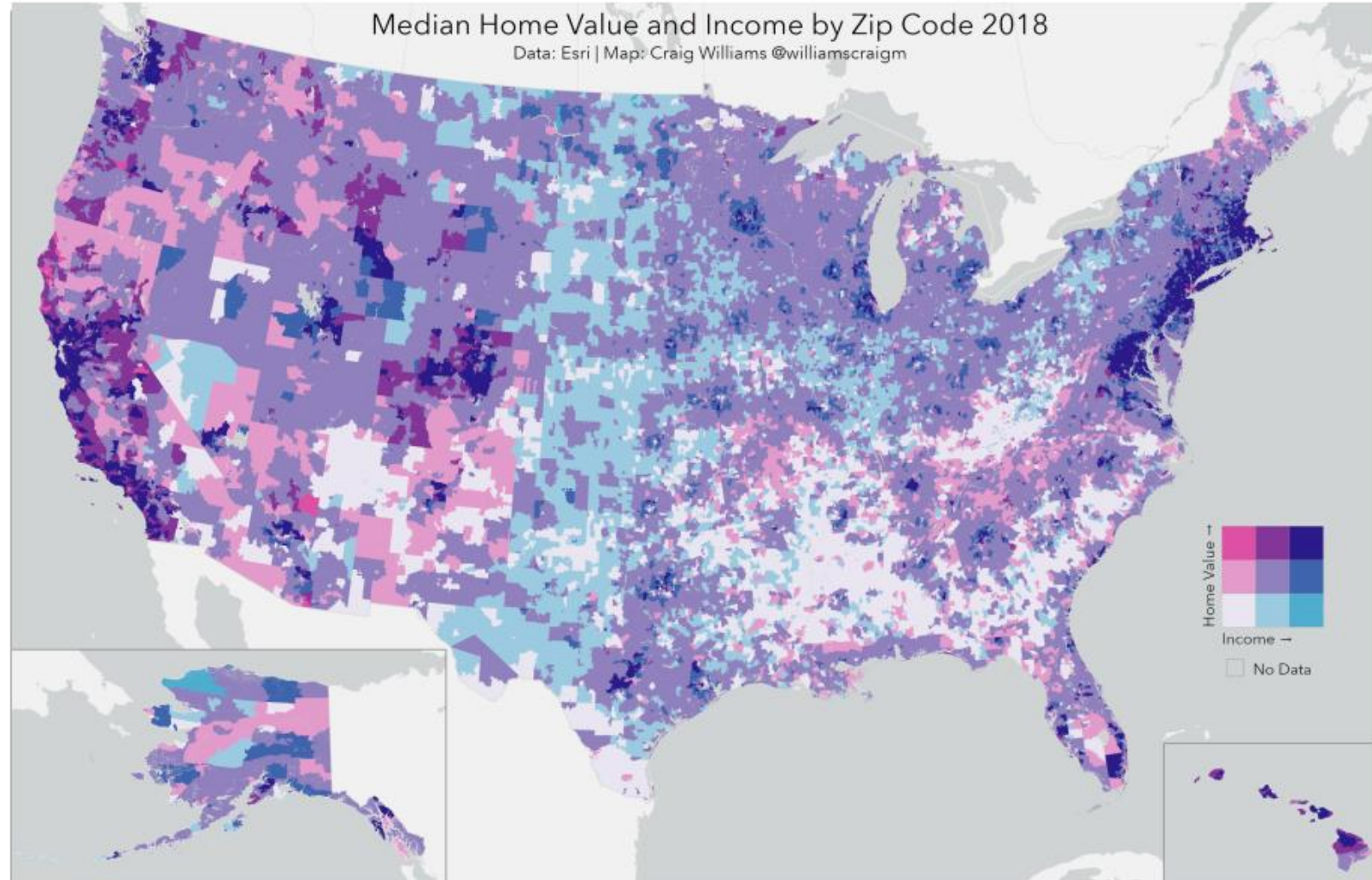
Browse Maps by others for Inspiration



Cedric Scherer
<https://www.cedricscherer.com/>



Browse Maps by others for Inspiration



<https://twitter.com/hashtag/30DayMapChallenge>



Maps and Projection



<https://thetruesize.com/>



Maps Checklist

- North Arrow
- Scale bar
- Coordinates (and system)
- Legend
- Further information such as author, sources, RGB band combination etc.

- Everything that is need to understand the map



Links

- Maps with a message
scalar.usc.edu/works/graphics-for-conservation/obfuscation?path=maps-with-a-message
- Creating maps in QGIS
http://www.qgistutorials.com/en/docs/making_a_map.html
- QGIS maps
<https://qgis.lrg/en/site/about/screenshots.html>
- QGIS map composer manual
https://docs.qgis.org/testing/en/docs/user_manual/print_composer/index.html

Supported by:



Federal Ministry
for the Environment, Nature Conservation
and Nuclear Safety



Federal Agency for
Nature Conservation



Thank you for your attention!

Dr. Insa Otte (on behalf of the EOCap4Africa Team)
and colleagues

insa.otte@uni-wuerzburg.de



MARTIN-LUTHER-UNIVERSITÄT



HALLE-WITTENBERG



UNIVERSITY OF BOTSWANA



INES Ruhengeri
Institute of Applied Sciences





References

Natural Earth. (n.d.). *Downloads*. Retrieved 4 February 2026, from <https://www.naturalearthdata.com/downloads/>

Scherer, C. (n.d.). *Cédric Scherer*. Retrieved 4 February 2026, from <https://www.cedricscherer.com/>

The true size. (n.d.). *The true size of...* Retrieved 4 February 2026, from <https://thetruesize.com/>